

Russell/Nomura Japan Equity Indexes

EQUITY: INDEX SERVICES DEPARTMENT

Performance summary



Research Analysts

[Japan index products](#)

Index Services Department - NFRC

idx_mgr@nfrco.jp

Fig. 1: Russell/Nomura Japan Equity Indexes performance summary

As of end-April 2026

Total returns (including dividends)

Index	No. of stocks	Weight (%)	Index value	Returns (%)*				
				1 month	3 months	6 months	12 months	YTD
Total Market	1,287	100.00	1,730.50	7.66	6.61	14.42	45.87	12.00
Value	1,016	51.08	4,315.84	3.35	4.74	18.82	53.64	11.28
Growth	606	48.92	612.81	12.56	8.61	9.89	37.97	12.71
Large	249	85.31	1,680.00	8.16	6.86	14.11	46.75	12.41
Large Value	178	40.96	4,063.81	3.17	4.53	18.41	54.45	11.34
Large Growth	142	44.35	657.56	13.22	9.07	10.15	39.73	13.38
Top	40	47.79	1,418.81	9.23	5.59	10.55	46.08	11.17
Top Value	22	17.65	4,215.11	2.93	2.98	17.06	60.90	11.99
Top Growth	33	30.14	565.88	13.29	7.17	6.92	37.14	10.67
Mid	209	37.52	2,203.61	6.83	8.50	19.50	47.06	14.02
Mid Value	156	23.31	3,578.42	3.36	5.74	20.80	48.15	10.86
Mid Growth	109	14.21	945.86	13.06	13.34	17.69	45.52	19.62
Mid-Small	1,247	52.21	2,149.18	6.26	7.54	18.57	45.27	12.75
Mid-Small Value	994	33.44	4,004.96	3.59	5.69	20.72	48.92	10.92
Mid-Small Growth	573	18.77	774.82	11.41	10.99	15.00	39.33	16.15
Small	1,038	14.69	2,008.41	4.86	5.17	16.19	41.01	9.64
Small Value	838	10.13	4,536.40	4.11	5.57	20.57	50.40	11.07
Small Growth	464	4.56	500.85	6.56	4.27	7.34	23.30	6.56
Small Core	346	10.26	648.75	5.02	5.42	15.89	40.72	10.00
Small Core Value	269	6.91	1,106.01	4.26	5.79	21.00	50.67	11.70
Small Core Growth	180	3.36	187.47	6.62	4.67	6.43	23.22	6.62
Micro	692	4.43	777.87	4.49	4.59	16.84	41.66	8.82
Micro Value	569	3.22	1,231.86	3.79	5.12	19.68	49.79	9.75
Micro Growth	284	1.21	186.07	6.39	3.19	9.84	23.69	6.37
Prime	988	98.79	4,860.70	7.69	6.64	14.40	45.97	12.04
Prime Value	773	50.22	7,087.74	3.34	4.75	18.85	53.82	11.33
Prime Growth	488	48.58	3,084.87	12.60	8.64	9.88	38.09	12.74

Note: * Returns are not annualized.

Source: Nomura Fiduciary Research & Consulting Co., Ltd. (NFRC)

For composition rules, please refer to Russell/Nomura Japan Equity Indexes rulebook.

Fig. 2: Russell/Nomura Japan Equity Indexes performance summary

As of end-April 2026

Price returns (excluding dividends)

Index	No. of stocks	Weight (%)	Index value	Returns (%) *				
				1 month	3 months	6 months	12 months	YTD
Total Market	1,287	100.00	863.03	7.65	5.55	13.11	42.56	10.88
Value	1,016	51.08	1,921.63	3.34	3.42	17.14	49.29	9.88
Growth	606	48.92	342.40	12.55	7.87	8.99	35.74	11.94
Large	249	85.31	835.44	8.15	5.84	12.86	43.53	11.34
Large Value	178	40.96	1,793.94	3.16	3.24	16.78	50.14	9.95
Large Growth	142	44.35	364.86	13.21	8.35	9.28	37.51	12.63
Top	40	47.79	684.52	9.22	4.59	9.42	43.00	10.11
Top Value	22	17.65	1,808.88	2.93	1.59	15.43	56.37	10.48
Top Growth	33	30.14	300.59	13.28	6.43	6.09	34.97	9.89
Mid	209	37.52	1,139.40	6.81	7.46	18.09	43.65	12.93
Mid Value	156	23.31	1,644.63	3.34	4.53	19.14	44.06	9.57
Mid Growth	109	14.21	557.51	13.05	12.66	16.74	43.19	18.90
Mid-Small	1,247	52.21	1,102.68	6.25	6.44	17.09	41.76	11.59
Mid-Small Value	994	33.44	1,844.50	3.57	4.41	18.98	44.71	9.57
Mid-Small Growth	573	18.77	455.97	11.40	10.25	14.00	37.00	15.38
Small	1,038	14.69	1,009.34	4.84	3.91	14.54	37.28	8.32
Small Value	838	10.13	2,093.71	4.09	4.15	18.67	45.90	9.56
Small Growth	464	4.56	293.16	6.54	3.38	6.21	20.96	5.65
Small Core	346	10.26	403.09	5.00	4.22	14.36	37.17	8.74
Small Core Value	269	6.91	647.53	4.25	4.44	19.21	46.36	10.27
Small Core Growth	180	3.36	129.54	6.60	3.77	5.36	20.96	5.71
Micro	692	4.43	469.49	4.46	3.20	14.94	37.53	7.36
Micro Value	569	3.22	697.33	3.77	3.54	17.56	44.93	8.08
Micro Growth	284	1.21	130.94	6.38	2.33	8.53	21.13	5.47
Prime	988	98.79	2,902.68	7.68	5.59	13.10	42.68	10.93
Prime Value	773	50.22	3,852.25	3.33	3.44	17.17	49.48	9.93
Prime Growth	488	48.58	2,020.24	12.59	7.90	8.98	35.86	11.96

Note: * Returns are not annualized.

Source: NFRC

Fig. 3: Russell/Nomura Japan Equity Indexes performance summary

As of end-April 2026

Total returns (including dividends)

Index	No. of stocks	Weight (%)	Index value	Returns (%) *				
				1 month	3 months	6 months	12 months	YTD
Total Market	1,287	100.00	1,730.50	7.66	6.61	14.42	45.87	12.00
Value	1,016	51.08	4,315.84	3.35	4.74	18.82	53.64	11.28
Growth	606	48.92	612.81	12.56	8.61	9.89	37.97	12.71
Large	249	85.31	1,680.00	8.16	6.86	14.11	46.75	12.41
Large Value	178	40.96	4,063.81	3.17	4.53	18.41	54.45	11.34
Large Growth	142	44.35	657.56	13.22	9.07	10.15	39.73	13.38
Top	40	47.79	1,418.81	9.23	5.59	10.55	46.08	11.17
Top Value	22	17.65	4,215.11	2.93	2.98	17.06	60.90	11.99
Top Growth	33	30.14	565.88	13.29	7.17	6.92	37.14	10.67
Mid	209	37.52	2,203.61	6.83	8.50	19.50	47.06	14.02
Mid Value	156	23.31	3,578.42	3.36	5.74	20.80	48.15	10.86
Mid Growth	109	14.21	945.86	13.06	13.34	17.69	45.52	19.62
Mid-Small	1,247	52.21	2,149.18	6.26	7.54	18.57	45.27	12.75
Mid-Small Value	994	33.44	4,004.96	3.59	5.69	20.72	48.92	10.92
Mid-Small Growth	573	18.77	774.82	11.41	10.99	15.00	39.33	16.15
Small	1,038	14.69	2,008.41	4.86	5.17	16.19	41.01	9.64
Small Value	838	10.13	4,536.40	4.11	5.57	20.57	50.40	11.07
Small Growth	464	4.56	500.85	6.56	4.27	7.34	23.30	6.56
Small Core	346	10.26	648.75	5.02	5.42	15.89	40.72	10.00
Small Core Value	269	6.91	1,106.01	4.26	5.79	21.00	50.67	11.70
Small Core Growth	180	3.36	187.47	6.62	4.67	6.43	23.22	6.62
Micro	692	4.43	777.87	4.49	4.59	16.84	41.66	8.82
Micro Value	569	3.22	1,231.86	3.79	5.12	19.68	49.79	9.75
Micro Growth	284	1.21	186.07	6.39	3.19	9.84	23.69	6.37
Prime	988	98.79	4,860.70	7.69	6.64	14.40	45.97	12.04
Prime Value	773	50.22	7,087.74	3.34	4.75	18.85	53.82	11.33
Prime Growth	488	48.58	3,084.87	12.60	8.64	9.88	38.09	12.74

Note: * Returns are not annualized.

Source: NFRC

Fig. 4: Russell/Nomura Japan Equity Indexes index data by industrial sector

As of end-April 2026

Number of stocks and weighting

Index	Total Market		Value		Growth		Small		Prime	
	No. of stocks	Weight (%)	No. of stocks	Weight (%)	No. of stocks	Weight (%)	No. of stocks	Weight (%)	No. of stocks	Weight (%)
Total	1,287	100.00	1,016	100.00	606	100.00	1,038	100.00	988	100.00
Fishery, Agriculture & Forestry	5	0.07	5	0.14	0	0.00	5	0.48	3	0.06
Mining	4	0.43	4	0.84	0	0.00	3	0.35	3	0.43
Construction	64	2.50	59	3.29	28	1.67	56	6.48	46	2.44
Foods	54	2.67	49	2.24	25	3.12	45	4.85	41	2.66
Textiles & Apparels	16	0.31	15	0.57	4	0.04	15	1.06	13	0.31
Pulp & Paper	8	0.13	8	0.25	0	0.00	7	0.45	6	0.12
Chemicals	96	4.80	85	4.58	39	5.03	79	8.40	76	4.76
Pharmaceuticals	33	3.54	23	3.87	19	3.20	24	2.27	27	3.57
Oil & Coal Products	4	0.53	4	1.04	0	0.00	2	0.33	4	0.54
Rubber Products	11	0.56	11	1.11	0	0.00	9	0.81	9	0.56
Glass & Ceramics Products	22	0.82	21	1.19	8	0.44	18	2.67	17	0.81
Iron & Steel	18	0.60	18	1.18	0	0.00	15	1.05	11	0.59
Nonferrous Metals	17	2.95	14	2.37	8	3.56	11	1.92	16	2.98
Metal Products	20	0.40	19	0.63	4	0.17	17	1.36	14	0.39
Machinery	92	6.51	79	4.67	45	8.43	76	8.12	70	6.50
Electric Appliances	109	21.53	82	7.16	62	36.52	76	9.38	88	21.66
Transportation Equipment	40	4.60	39	8.35	8	0.68	27	2.00	34	4.63
Precision Instruments	23	2.03	17	0.40	15	3.72	17	2.23	20	2.03
Other Products	32	1.91	23	0.84	15	3.03	27	2.05	25	1.91
Electric Power & Gas	20	1.25	20	2.45	1	0.00	13	1.42	17	1.26
Land Transportation	35	1.84	33	3.29	11	0.32	25	4.23	34	1.86
Marine Transportation	6	0.63	6	1.24	0	0.00	3	0.15	5	0.64
Air Transportation	2	0.23	2	0.44	0	0.00	0	0.00	2	0.23
Warehousing & Harbor Transportation Services	8	0.14	8	0.22	2	0.05	8	0.93	4	0.12
Information & Communication	111	6.72	39	3.00	95	10.61	94	6.71	79	6.71
Wholesale Trade	96	7.95	88	10.94	37	4.83	88	7.06	62	7.91
Retail Trade	111	3.92	71	2.16	75	5.76	96	7.18	86	3.89
Banks	65	10.16	64	19.76	2	0.12	50	7.51	55	10.21
Securities & Commodity Futures	19	0.88	17	1.55	8	0.18	16	0.77	11	0.86
Insurance	9	3.27	9	3.89	4	2.63	2	0.15	9	3.31
Other Financing Business	20	1.21	16	1.93	5	0.47	16	1.46	17	1.22
Real Estate	39	1.93	31	3.06	23	0.75	31	2.13	24	1.90
Services	78	2.95	37	1.32	63	4.65	67	4.03	60	2.92

Source: NFRC

Fig. 5: Russell/Nomura Japan Equity Indexes index data by industrial sector

As of end-April 2026

Monthly returns*

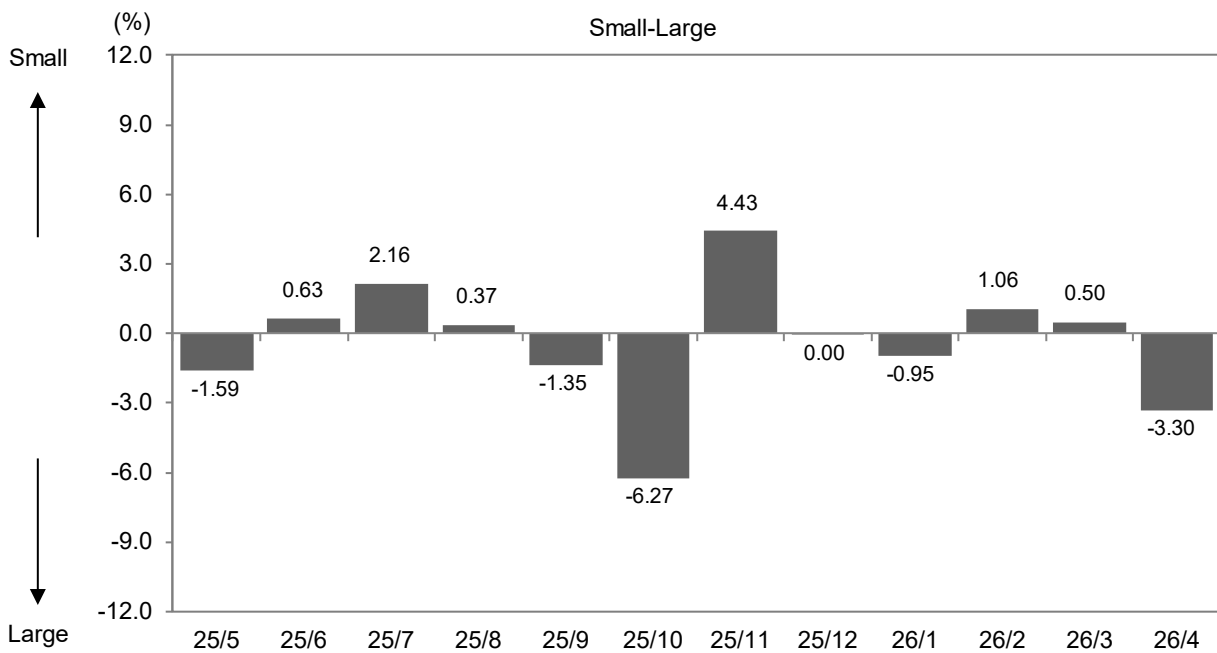
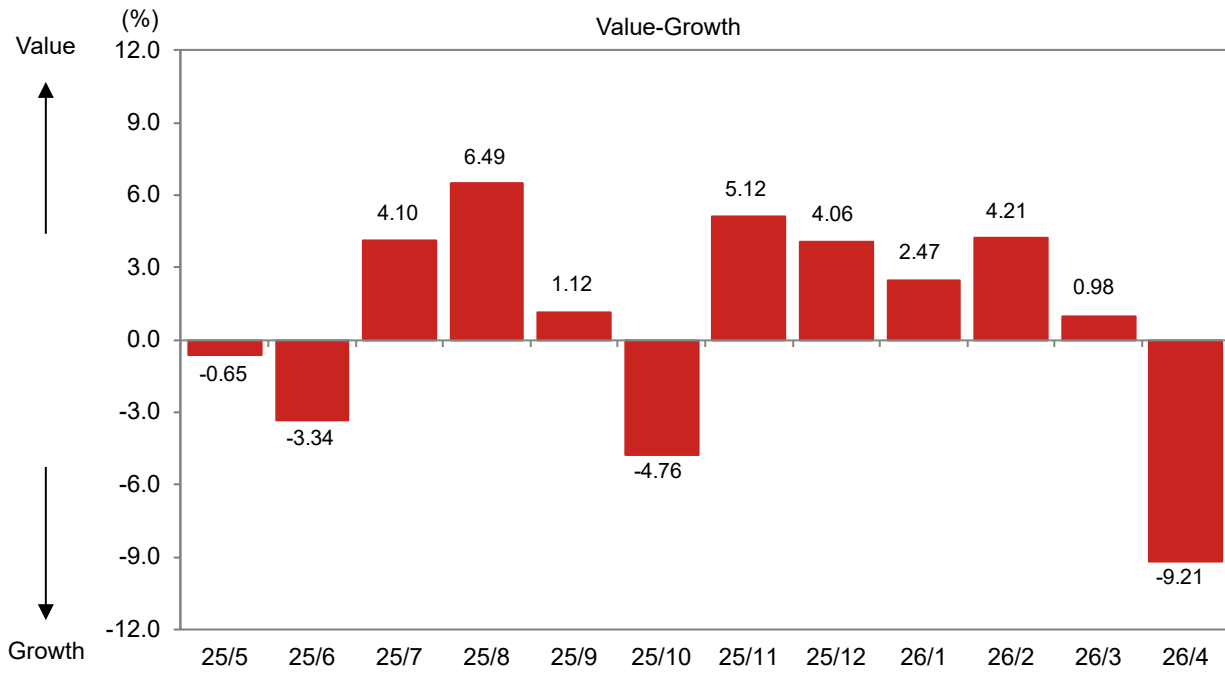
Index	Total Market		Value		Growth		Small		Prime	
	excl dividends	incl dividends	excl dividends	incl dividends	excl dividends	incl dividends	excl dividends	incl dividends	excl dividends	incl dividends
Total	7.65	7.66	3.34	3.35	12.55	12.56	4.84	4.86	7.68	7.69
Fishery, Agriculture & Forestry	-7.95	-7.95	-7.95	-7.95	-	-	-7.95	-7.95	-8.10	-8.10
Mining	-11.21	-11.21	-11.21	-11.21	-	-	-10.67	-10.67	-11.19	-11.19
Construction	2.95	2.97	1.42	1.44	6.23	6.26	4.23	4.28	2.88	2.90
Foods	0.46	0.46	-2.70	-2.69	2.96	2.96	-2.64	-2.62	0.53	0.53
Textiles & Apparels	2.51	2.50	2.63	2.62	0.93	0.93	3.17	3.15	2.80	2.78
Pulp & Paper	-2.15	-2.15	-2.15	-2.15	-	-	-1.42	-1.42	-2.35	-2.35
Chemicals	7.07	7.07	4.72	4.72	9.40	9.40	6.57	6.58	7.02	7.02
Pharmaceuticals	-5.78	-5.78	-5.09	-5.09	-6.62	-6.62	-5.39	-5.39	-5.80	-5.80
Oil & Coal Products	-8.10	-8.10	-8.10	-8.10	-	-	-9.19	-9.19	-8.10	-8.10
Rubber Products	1.31	1.31	1.31	1.31	-	-	1.59	1.59	1.30	1.30
Glass & Ceramics Products	16.78	16.78	12.94	12.94	29.18	29.18	21.88	21.88	17.32	17.32
Iron & Steel	-1.35	-1.34	-1.35	-1.34	-	-	-1.32	-1.29	-0.99	-0.99
Nonferrous Metals	32.12	32.12	17.88	17.88	44.19	44.19	11.94	11.94	32.16	32.16
Metal Products	10.82	10.82	12.40	12.40	5.19	5.19	4.39	4.39	11.53	11.53
Machinery	13.13	13.17	14.49	14.55	12.36	12.38	14.41	14.41	13.21	13.24
Electric Appliances	23.30	23.31	21.20	21.21	23.74	23.75	20.63	20.65	23.27	23.28
Transportation Equipment	-1.95	-1.93	-2.63	-2.61	8.00	8.00	4.07	4.16	-1.98	-1.96
Precision Instruments	6.33	6.33	1.90	1.90	6.86	6.86	15.24	15.24	6.22	6.22
Other Products	-4.81	-4.81	5.81	5.81	-7.50	-7.50	1.22	1.22	-4.88	-4.88
Electric Power & Gas	-6.32	-6.30	-6.33	-6.31	-0.29	-0.29	-8.67	-8.66	-6.36	-6.33
Land Transportation	-4.12	-4.12	-3.80	-3.80	-7.41	-7.41	-1.01	-1.00	-4.13	-4.13
Marine Transportation	-4.38	-4.38	-4.38	-4.38	-	-	-1.02	-1.02	-4.41	-4.41
Air Transportation	-5.76	-5.76	-5.76	-5.76	-	-	-	-	-5.76	-5.76
Warehousing & Harbor Transportation Services	-1.48	-1.48	-1.52	-1.52	-1.25	-1.25	-1.48	-1.48	-1.40	-1.40
Information & Communication	11.02	11.03	-2.16	-2.16	15.62	15.64	2.76	2.80	11.15	11.16
Wholesale Trade	-0.86	-0.86	-0.85	-0.85	-0.90	-0.90	1.25	1.26	-0.92	-0.92
Retail Trade	-0.90	-0.87	-6.34	-6.32	1.41	1.44	-3.78	-3.74	-0.84	-0.81
Banks	9.02	9.02	9.00	9.00	11.47	11.47	7.97	7.98	8.99	8.99
Securities & Commodity Futures	4.47	4.65	4.12	4.31	7.73	7.73	2.03	2.02	4.54	4.72
Insurance	-1.35	-1.35	-1.31	-1.31	-1.42	-1.42	1.35	1.35	-1.35	-1.35
Other Financing Business	8.99	8.99	10.39	10.39	3.39	3.39	4.29	4.29	8.95	8.95
Real Estate	2.12	2.12	2.82	2.82	-0.77	-0.77	-1.92	-1.92	2.09	2.09
Services	2.56	2.57	0.77	0.79	3.11	3.11	1.01	1.03	2.54	2.55

Note: * Returns are not annualized.

Source: NFRC

Fig. 6: Monthly performance

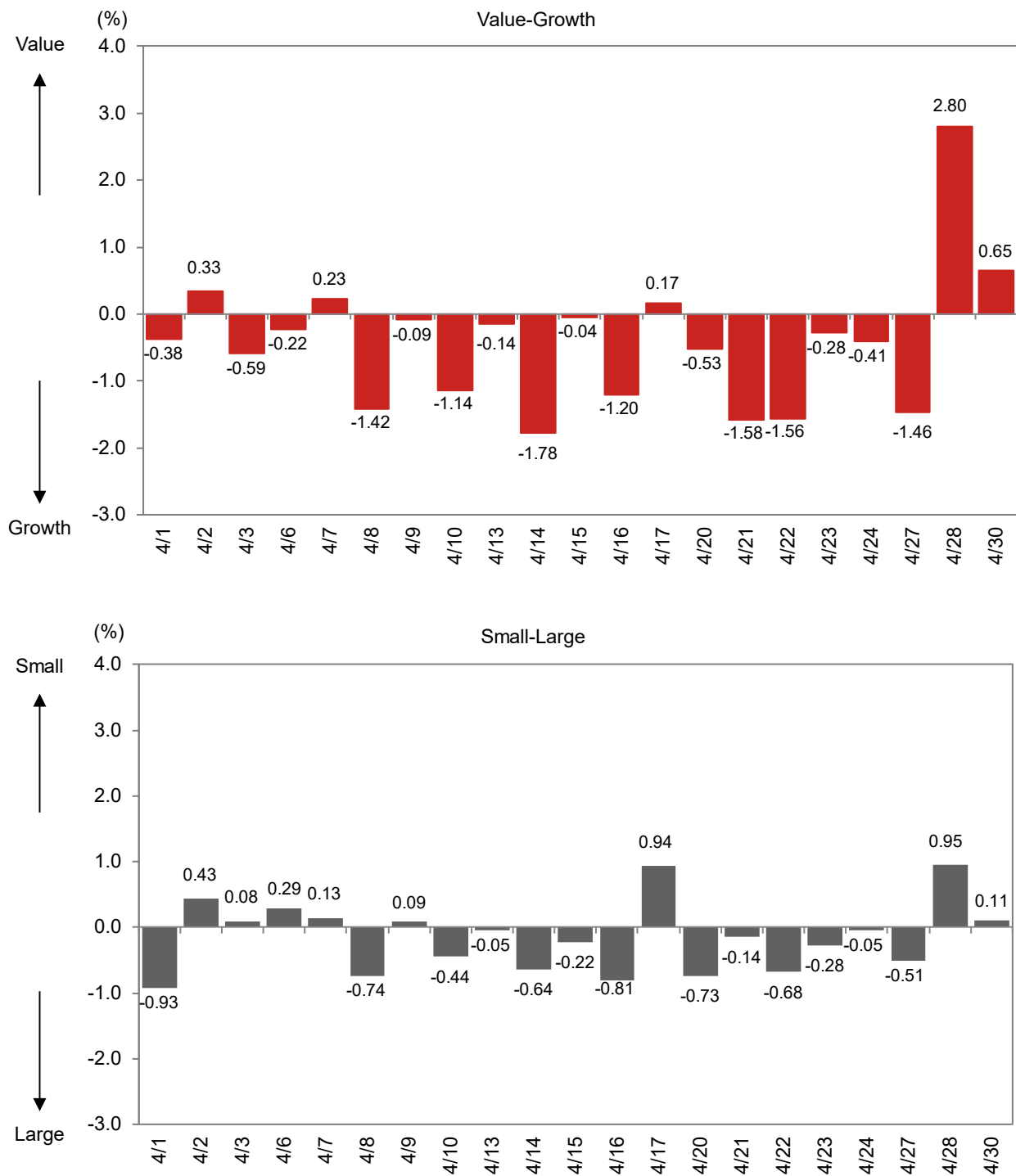
Total return



Note: Value-Growth is the difference between Value and Growth returns. Small-Large is the difference between Small and Large returns. Returns are not annualized.
Source: NFRC

Fig. 7: Daily performance

Total return



Note: Value-Growth is the difference between Value and Growth returns. Small-Large is the difference between Small and Large returns. Returns are not annualized. Source: NFRC

Fig. 8: Russell/Nomura Japan Equity Indexes key indicators

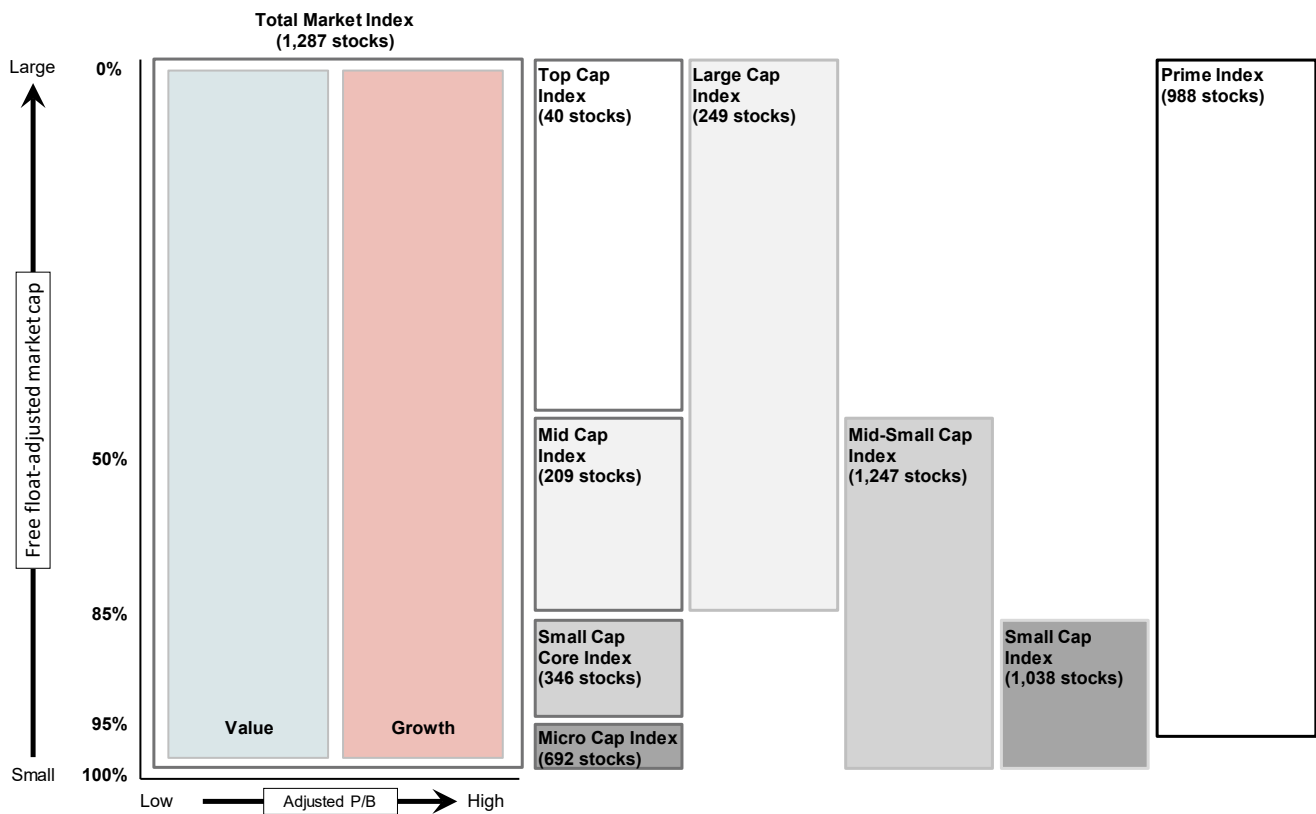
As of end-April 2026

Index	P/E (x)	P/B (x)	Dividend yield (%)	ROE (%)	Rec profit growth (%)
Total Market	17.80	1.69	2.07	9.79	7.67
Value	14.43	1.17	2.72	8.33	13.99
Growth	23.56	3.13	1.40	13.91	-1.90
Large	18.24	1.79	2.00	10.11	7.17
Large Value	14.39	1.21	2.70	8.62	15.03
Large Growth	24.22	3.20	1.35	13.82	-3.35
Top	19.97	2.15	1.89	11.14	0.12
Top Value	15.02	1.38	2.83	9.48	19.05
Top Growth	24.73	3.17	1.34	13.40	-13.20
Mid	16.43	1.47	2.14	9.22	15.16
Mid Value	13.94	1.10	2.61	8.11	12.53
Mid Growth	23.22	3.25	1.38	14.74	23.18
Mid-Small	16.20	1.41	2.24	8.97	13.71
Mid-Small Value	14.13	1.08	2.66	7.86	11.77
Mid-Small Growth	21.89	3.06	1.49	14.69	19.65
Small	15.64	1.28	2.48	8.42	10.22
Small Value	14.59	1.05	2.77	7.32	9.94
Small Growth	18.60	2.58	1.83	14.57	11.09
Small Core	15.96	1.34	2.37	8.63	11.08
Small Core Value	15.06	1.09	2.66	7.38	10.29
Small Core Growth	18.18	2.57	1.76	14.87	13.37
Micro	14.95	1.17	2.74	7.98	8.44
Micro Value	13.68	0.97	3.01	7.20	9.27
Micro Growth	19.87	2.60	2.02	13.74	5.49
Prime	17.86	1.70	2.06	9.82	7.60
Prime Value	14.46	1.18	2.71	8.36	14.03
Prime Growth	23.57	3.13	1.39	13.91	-2.03

Note: All financial data are based on current-FY forecasts (with preference given to consolidated figures).

Source: NFRC

Fig. 9: Russell/Nomura Japan Equity Indexes



No. of stocks in each index is as of end-April 2026.

Source: NFRC

All the indexes (Total Market, the capitalization indexes, Value, Growth, and Prime) also have indexes based on the 33 industrial sectors.

Divisions based on market cap exclude the value of stable shareholdings.

Value and Growth indexes are defined in terms of P/B ratios adjusted for unrealized gains/losses.

Fig. 10: Russell/Nomura Japan Equity Indexes performance summary

As of end-April 2026

Price returns (excluding dividends), US dollar basis

Index	No. of stocks	Weight (%)	Index value	Returns (%) *				
				1 month	3 months	6 months	12 months	YTD
Total Market	1,287	100.00	1,292.88	7.31	1.37	9.00	27.13	8.00
Value	1,016	51.08	2,878.72	3.01	-0.67	12.87	33.13	7.02
Growth	606	48.92	512.94	12.19	3.60	5.03	21.05	9.03
Large	249	85.31	1,251.54	7.80	1.65	8.75	27.99	8.44
Large Value	178	40.96	2,687.44	2.83	-0.84	12.53	33.88	7.10
Large Growth	142	44.35	546.58	12.85	4.06	5.30	22.63	9.70
Top	40	47.79	1,025.46	8.88	0.45	5.44	27.52	7.24
Top Value	22	17.65	2,709.82	2.60	-2.43	11.23	39.45	7.61
Top Growth	33	30.14	450.30	12.92	2.22	2.22	20.36	7.04
Mid	209	37.52	1,706.90	6.47	3.21	13.79	28.10	9.99
Mid Value	156	23.31	2,463.77	3.01	0.39	14.80	28.47	6.72
Mid Growth	109	14.21	835.18	12.69	8.20	12.49	27.69	15.82
Mid-Small	1,247	52.21	1,651.89	5.91	2.23	12.83	26.42	8.69
Mid-Small Value	994	33.44	2,763.18	3.24	0.28	14.65	29.04	6.72
Mid-Small Growth	573	18.77	683.07	11.04	5.89	9.85	22.17	12.38
Small	1,038	14.69	1,512.06	4.51	-0.20	10.37	22.42	5.51
Small Value	838	10.13	3,136.51	3.76	0.03	14.35	30.11	6.72
Small Growth	464	4.56	439.17	6.20	-0.71	2.34	7.86	2.90
Small Core	346	10.26	256.93	4.67	0.09	10.19	22.32	5.92
Small Core Value	269	6.91	412.74	3.92	0.30	14.87	30.51	7.41
Small Core Growth	180	3.36	82.57	6.26	-0.34	1.52	7.86	2.96
Micro	692	4.43	299.26	4.13	-0.88	10.76	22.65	4.57
Micro Value	569	3.22	444.48	3.44	-0.56	13.28	29.24	5.28
Micro Growth	284	1.21	83.46	6.04	-1.72	4.58	8.02	2.73
Prime	988	98.79	2,102.15	7.34	1.41	8.98	27.24	8.05
Prime Value	773	50.22	2,789.84	3.00	-0.65	12.90	33.30	7.07
Prime Growth	488	48.58	1,463.08	12.23	3.63	5.02	21.15	9.06

Note: * Returns are not annualized.

Source: NFRC

Fig. 11: Russell/Nomura Japan Equity Indexes performance summary

As of end-April 2026

Total returns (including dividends), US dollar basis

Index	No. of stocks	Weight (%)	Index value	Returns (%) *				
				1 month	3 months	6 months	12 months	YTD
Total Market	1,287	100.00	2,592.41	7.32	2.39	10.25	30.08	9.09
Value	1,016	51.08	6,465.40	3.03	0.59	14.50	37.01	8.39
Growth	606	48.92	918.03	12.20	4.31	5.89	23.04	9.78
Large	249	85.31	2,516.74	7.81	2.63	9.95	30.87	9.49
Large Value	178	40.96	6,087.85	2.84	0.39	14.10	37.73	8.45
Large Growth	142	44.35	985.06	12.86	4.75	6.14	24.60	10.44
Top	40	47.79	2,125.46	8.88	1.41	6.53	30.26	8.28
Top Value	22	17.65	6,314.50	2.60	-1.10	12.79	43.48	9.08
Top Growth	33	30.14	847.73	12.93	2.93	3.03	22.29	7.79
Mid	209	37.52	3,301.15	6.49	4.20	15.15	31.14	11.06
Mid Value	156	23.31	5,360.70	3.03	1.55	16.40	32.12	7.98
Mid Growth	109	14.21	1,416.96	12.70	8.85	13.41	29.76	16.52
Mid-Small	1,247	52.21	3,219.61	5.93	3.28	14.25	29.55	9.82
Mid-Small Value	994	33.44	5,999.68	3.26	1.50	16.32	32.80	8.04
Mid-Small Growth	573	18.77	1,160.73	11.05	6.60	10.82	24.24	13.14
Small	1,038	14.69	3,008.73	4.52	1.01	11.96	25.74	6.79
Small Value	838	10.13	6,795.81	3.78	1.39	16.18	34.12	8.18
Small Growth	464	4.56	750.30	6.22	0.15	3.44	9.95	3.79
Small Core	346	10.26	413.52	4.68	1.25	11.67	25.48	7.14
Small Core Value	269	6.91	704.98	3.93	1.60	16.59	34.36	8.80
Small Core Growth	180	3.36	119.50	6.28	0.52	2.56	9.88	3.85
Micro	692	4.43	495.82	4.15	0.45	12.58	26.33	5.99
Micro Value	569	3.22	785.20	3.46	0.96	15.33	33.57	6.90
Micro Growth	284	1.21	118.60	6.05	-0.89	5.84	10.30	3.61
Prime	988	98.79	3,520.17	7.35	2.42	10.23	30.17	9.13
Prime Value	773	50.22	5,133.02	3.01	0.61	14.52	37.17	8.44
Prime Growth	488	48.58	2,234.09	12.24	4.34	5.88	23.14	9.81

Note: * Returns are not annualized.

Source: NFRC

Data publication services

Data for the Russell/Nomura Japan Equity Indexes can be obtained via the following channels.¹

Index values are published in the following media:

- Bloomberg (RNJI)
 - Jiji (RNSI/12400, RNSIIDV/12400)
 - QUICK (NRIJ500–503, 510–517)
 - LSEG (FRCNRI01, FRCNRI02, FRCNRI03, FRCNRI04, .JRNP, .JRNS)
 - Website (<https://www.nfrc.co.jp/SMI/en/frcnri/index.html>)
-

More detailed data

More detailed data on index values and individual stock information can be obtained through Nomura Research Institute services Aurora, e-Aurora, and IDS. For information, contact:

Nomura Research Institute

Investment Information Systems Business Department

e-mail: ids-sales@nri.co.jp

Contact:

Nomura Fiduciary Research & Consulting Co., Ltd.

e-mail: idx_mgr@nfrc.co.jp

¹ Published data are all for reference only.

Disclaimer

The intellectual property rights and any other rights in Russell/Nomura Japan Equity Index belong to Nomura Fiduciary Research & Consulting Co., Ltd. ("NFRC") and FTSE Russell. NFRC and FTSE Russell do not guarantee accuracy, completeness, reliability, usefulness, marketability, merchantability and fitness of the Index, and do not account for business activities or services that any index user and/or its affiliates undertakes with the use of the Index.

Publication of the index could be delayed or canceled if a computer malfunction, natural disaster, or other unavoidable event affects the index calculation process.

Please read "About The Index License" before using the indexes, regardless of the channel through which indexes/data is acquired (NFRC website, services via information vendors, etc)

"About The Index License"

<https://www.nfrc.co.jp/SMI/en/indexlicense.html>

- This material has been prepared by NFRC for information purposes only.
- All opinions and/or predictions contained in this material are based on the determination of NFRC at the time this material was prepared and are subject to change without notice. We do not provide any guarantee or assurance that opinions contained in this material relating to future predictions will actually take place. Some part of the content of this material is based on various information available to NFRC which NFRC determined to be reliable. However, NFRC does not guarantee the accuracy of such information, and there is a possibility that such information was summarized and imperfect. The past investment performance is not indicative of the future results.
- This material is not intended as an investment solicitation or an investment advice in connection with any particular security transaction.
- If a customer invests in an investment product that uses a market benchmark developed and provided by NFRC, a portion of the fees for the use of such benchmark may be directly or indirectly attributed to NFRC. For details, please visit the following website.
Securities Market Benchmarks: <https://www.nfrc.co.jp/SMI/en/>
- This material may only be used by the customer to whom it was distributed. This material is the copyrighted work of NFRC and you may not copy, transmit or redistribute this material, in whole or in part, without the prior written consent of NFRC.

Nomura Fiduciary Research & Consulting Co., Ltd.

Registration Number: Director-General of the Kanto Local Financial Bureau (Finance & Commerce) Registration No.451

Membership: Investment Management Association of Japan No. 011-00961